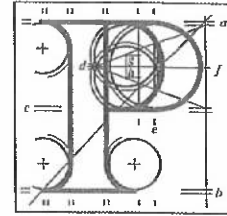


Our Case Number: ABP-316272-23

Planning Authority Reference Number:



**An
Bord
Pleanála**

Saint Judes Mens Shed Club
c/o John Brady, Chairman
31 Templeogue Wood
Templeogue
Dublin 6W
D6WCD70

Date: 16 August 2023

Re: Bus Connects Templeogue/Rathfarnham to City Centre Core Bus Corridor Scheme
Templeogue/Rathfarnham to City Centre

Dear Sir / Madam,

An Bord Pleanála has received your recent submission in relation to the above-mentioned proposed road development and will take it into consideration in its determination of the matter. Please accept this letter as a receipt for the fee of €50 that you have paid.


Please note that the proposed road development shall not be carried out unless the Board has approved it or approved it with modifications.

The Board has also received an application for confirmation of a compulsory purchase order which relates to this proposed road development. The Board has absolute discretion to hold an oral hearing in respect of any application before it, in accordance with section 218 of the Planning and Development Act 2000, as amended. Accordingly, the Board will inform you in due course on this matter. The Board shall also make a decision on both applications at the same time.

If you have any queries in relation to this matter please contact the undersigned officer of the Board at laps@pleanala.ie

Please quote the above-mentioned An Bord Pleanála reference number in any correspondence or telephone contact with the Board.

Yours faithfully,


Eimear Reilly
Executive Officer
Direct Line: 01-8737184

Teil	Tel	(01) 858 8100
Glaó Áitiúil	LoCall	1890 275 175
Facs	Fax	(01) 872 2684
Láithreán Gréasáin	Website	www.pleanala.ie
Ríomhphost	Email	bord@pleanala.ie

64 Sráid Maoilbhríde	64 Marlborough Street
Baile Átha Cliath 1	Dublin 1
D01 V902	D01 V902

BusConnects Dublin

AN BORD PLEANÁLA	
LDG-	065598-23
ABP-	
50 09 AUG 2023	
Type:	CHG
Time:	
By:	Hand.

Observations on Templeogue/Rathfarnham to City Centre Core Bus Corridor

To: An Bord Pleanála

From: St Judes Mens Shed Club, Wellington Lane, Templeogue, Dublin 6W

St. Judes Mens Shed Club is a community based voluntary organisation with men and women participating across a number of areas including Templeogue, Greenhills, Crumlin, Rathfarnham, Kingswood, etc. It has been in existence for over ten years. The members are from retired groups, some well into their eighties.

The activities of the Club include computer classes, bowls, Comhra, exercise classes, mindfulness sessions, organised tours, walking groups, gardening and small repair work , social gatherings, etc.

BusConnects Proposals:

The Busconnects proposals do have a number of positive objectives, including improved safety for cyclists and pedestrians. However there are a number of serious weaknesses in the proposals for our members.

Observation 1

The installation of priority traffic lights in Templeogue Village and at the Spawell replacing the current roundabout will result in a back-up of traffic at Templeogue Bridge, and traffic will be forced down Wellington Lane. There is a real fear among our members that this will cause major delays in accessing medical services-for example, Tallaght Hospital and other medical services and appointments. Has this been considered in the proposals and if so, what actions are proposed to mitigate the adverse impact on local elderly citizens?

Observation 2.

Members wishing to engage emergency /medical assistance such as carers, doctors, community nursing etc, will find it nearly impossible to get such urgent help due to the extended "Bus Gate" hours proposed for Terenure, Kimmage, and Templeogue areas. This will pose increased risk to the health, safety and well-being of members.

Observation 3.

Members wishing to engage service providers and tradesmen for emergency repairs, etc and have the need for home supplies, meals on wheels, etc will be greatly disadvantaged because access to these services will be severely restricted again due to the extended "Bus Gate" hours proposed in the NTA application for planning permission. Accordingly, the NTA objectives of "facilitating the efficient movement of goods and services" do not stand up to scrutiny

Observation 4.

The Busconnects proposals are totally ignoring the needs of elderly citizens in our community who cannot use buses or cycle, because of age, infirmity, disability etc and have no alternative but to use their private cars to go about their daily lives.

Observation 5.

Elderly people in our area wishing to visit friends and relatives in other parts of the city and elderly friends and relatives wishing to visit elderly people in our community will find it impossible to do so during normal hours due to restricted access as outlined above.

This is totally against one the objectives of the NTA proposals to have "better connected communities and enhanced quality of life".

Having elderly people take a number of buses in the dark in winter times and wait for bus connections for extended periods of time will endanger their safety and well-being

Observation 6.

Access to sporting and recreational facilities will be extremely restricted to our members due again to the proposed extended "Bus Gate" hours and roads not accessible not only in our area but further into the city. This will result in extended travelling time to reach destinations and result in increased carbon emissions, again totally against the objectives of the NTA proposals. Further if members/ residents cease to travel due to the restrictions listed above, the result will be the increased isolation of elderly people, again, contradictory to the stated objectives of NTA proposals "to have better quality of life".

Observation 7.

Access to the Crumlin Children's Hospital is available by one bus from our area at present. However under the Busconnects proposals at least two bus journeys will be required.

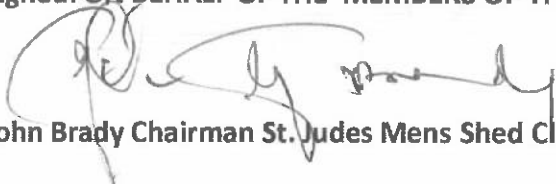
At present the 150 bus terminus is in the middle of, or close to a number of estates in the Templeogue area, e.g Orwell, Rossmore, Templeogue Wood. The loss of this route will cause major hardship to residents who will in future have to travel some distance to access a bus service into the City.

Conclusion

While it is accepted that the proposed NTA Core Bus Corridor Scheme will provide walking, cycling and bus infrastructure on this key access corridor in the region, it is clear the Busconnects proposals do not take on board the needs of a large proportion of the citizens living in the area.

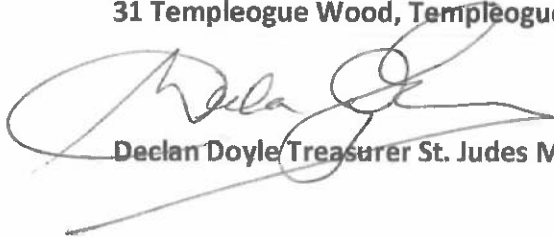
Accordingly St. Judes Mens Shed Club requests that An Bord Pleanala reject the NTA's current application for planning permission.

Signed: ON BEHALF OF THE MEMBERS OF THE COMMITTEE ST.JUDES MENS SHED CLUB



John Brady Chairman St. Judes Mens Shed Club

31 Templeogue Wood, Templeogue Dublin 6W Eircode D6W CD70



Declan Doyle Treasurer St. Judes Mens Shed Club